

The TimberStrong, LLC, Technical Planning Guide is designed to assist you in making the best decisions regarding your upcoming deck or dock project. It is a roadmap that will help you choose the type of decking and the manner in which that decking can be supplied to you in panel form.

After you have chosen your decking material and have determined the specifications your project requires, you may submit an electronic version of this planning guide by going to the TimberStrong Contact Page of our website and clicking on the Project Initiation Button where you can enter your information and attach any relevant images or drawings. Or, if you prefer, you may mail, fax, or email a scanned copy of the print version of this guide to:

TimberStrong, LLC
604 Crisscross Road
Fleetwood, PA 19522

Ph: 610.899.0286
Email: sales@timberstrong.com

Table of Contents

Overview: Page 2

What We Need from You: Page 3

What You Can Expect from Us: Page 3

Installation: Page 3

Project Notes: Page 3

Your Project Requirements: Page 4

Technical Planning Questionnaire: Page 8



TimberStrong, LLC

Technical Planning Guide

Overview

Your Project from Start to Finish

1. You pick your decking color
2. We panelize the decking
3. Your panels are delivered to your site
4. You install the deck panels



What is the TimberStrong Deck Panel System?

The TimberStrong Deck Panel System uses the patented TimberStrong Fastener to pre-assemble deck panels using decking material you have purchased from us or which has been supplied to us. Your deck panels are shipped to your site, where you attach the numbered deck panels to the substructure by screwing through the TimberStrong Fastener into the joist below.

How Wide Can TimberStrong Deck Panels Be?

Our pre-assembled panels can be made up to 12 feet wide.

Where Can TimberStrong Panels Be Used?

- Docks
- Floating Docks
- Boardwalks
- Gangways
- Piers and Walkways
- Handicapped Ramps
- Stair Treads and Landings
- Decks and Porches
- Roof Top Decks
- Animal Kennel Floors

Spacing Options

Because our panels may be used in environmentally sensitive areas such as marinas, light penetration to Submerged Aquatic Vegetation (SAV) is a major concern and is usually dictated by local or federal environmental agencies. The TimberStrong Fasteners come in standard $\frac{3}{8}$ " size. Spacing size should be specified when the order is placed, otherwise all panels are supplied with a $\frac{1}{2}$ -inch space between boards.

Can Panels Be Made To Be Removable for Utility Access?

Yes. Please indicate on drawings where utility access is required. This may include electric connections, water connections and shutoffs.

TimberStrong, LLC

Technical Planning Guide

What We Need From You

1. Drawings and or Photos of the Project

Any drawing of your project, from rough drawings to professional drawings executed by an architect, designer or engineer is considered acceptable in the planning stage. These can be attached and uploaded along with the electronic version of this form.

2. Completed Project Questionnaire

Please complete the project questionnaire in its entirety and then mail, email as an attachment or fax the document to us.

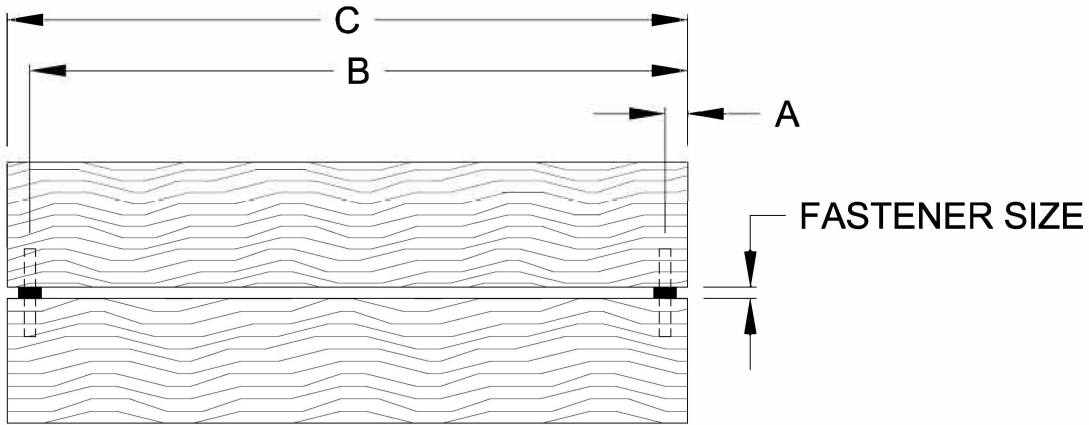
What You Can Expect From Us

Once this form is submitted, our design and manufacturing staff will review your project. We will contact you to discuss our recommendations for using the TimberStrong Panel System, as well as the material and installation costs. Upon purchase you will be furnished with a detailed installation guide.

Installation

Installation of the panels is completed by your labor force or by your contractor. Consultation is always available by one of our TimberStrong staff. In some cases, we can provide on-site supervision at an additional cost. We encourage you to visit our installation page on our web site to view our informational video of how the panels are installed.

Project Notes

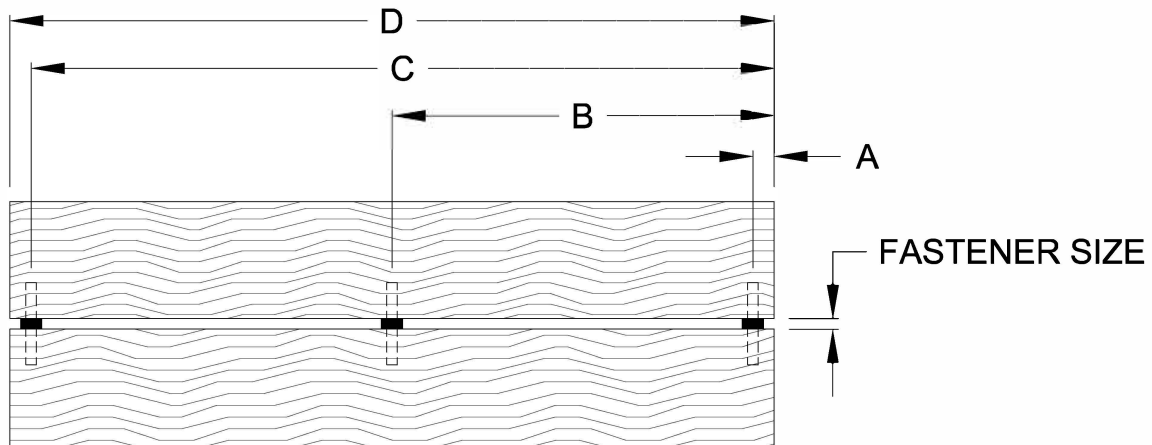


OPTION # 1
[2 FASTENERS]

DIMENSIONS REQUESTED		
A	B	C

- 1/4" FASTENERS
- 3/8" FASTENERS
- 1/2" FASTENERS

MINIMUM BOARD LENGTH - 18"
MAXIMUM BOARD LENGTH - 12'-0"

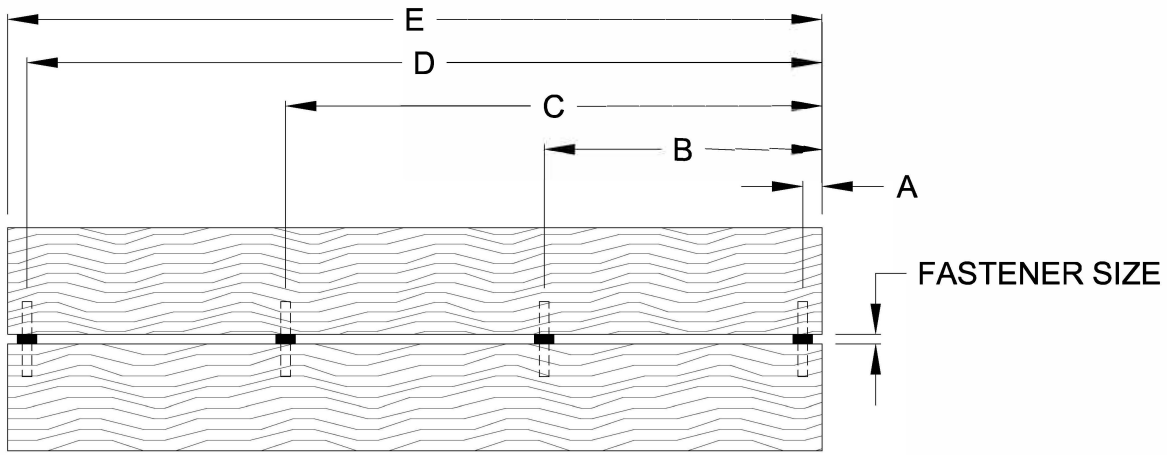


OPTION # 2
[3 FASTENERS]

DIMENSIONS REQUESTED			
A	B	C	D

- 1/4" FASTENERS
- 3/8" FASTENERS
- 1/2" FASTENERS

MINIMUM BOARD LENGTH - 18"
MAXIMUM BOARD LENGTH - 12'-0"

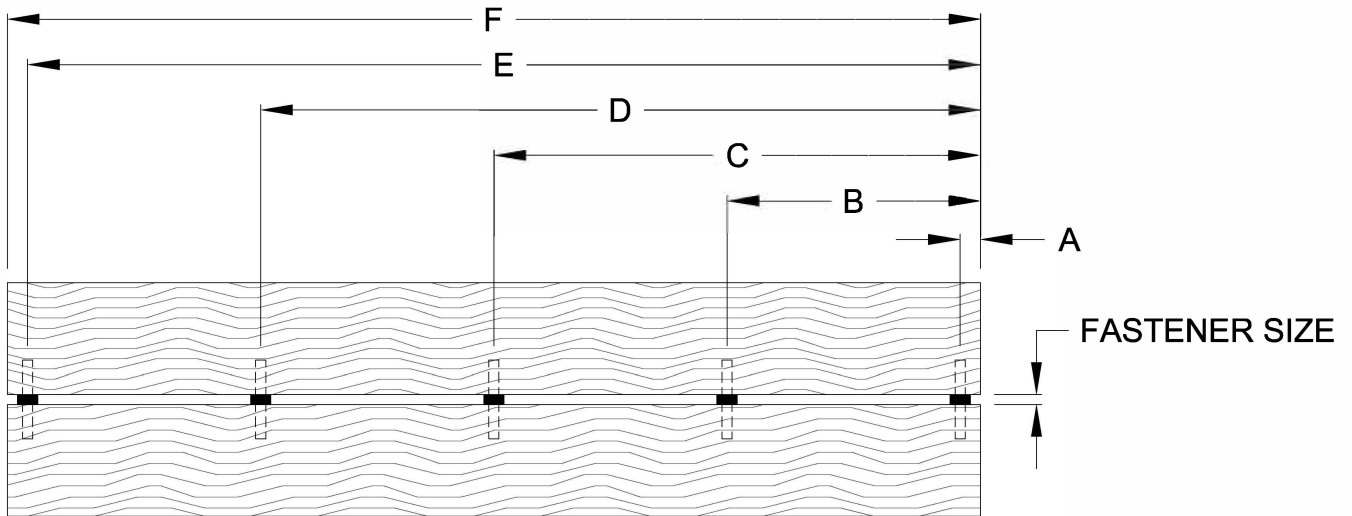


OPTION # 3
[4 FASTENERS]

DIMENSIONS REQUESTED				
A	B	C	D	E

- 1/4" FASTENERS
- 3/8" FASTENERS
- 1/2" FASTENERS

MINIMUM BOARD LENGTH - 18"
MAXIMUM BOARD LENGTH - 12'-0"

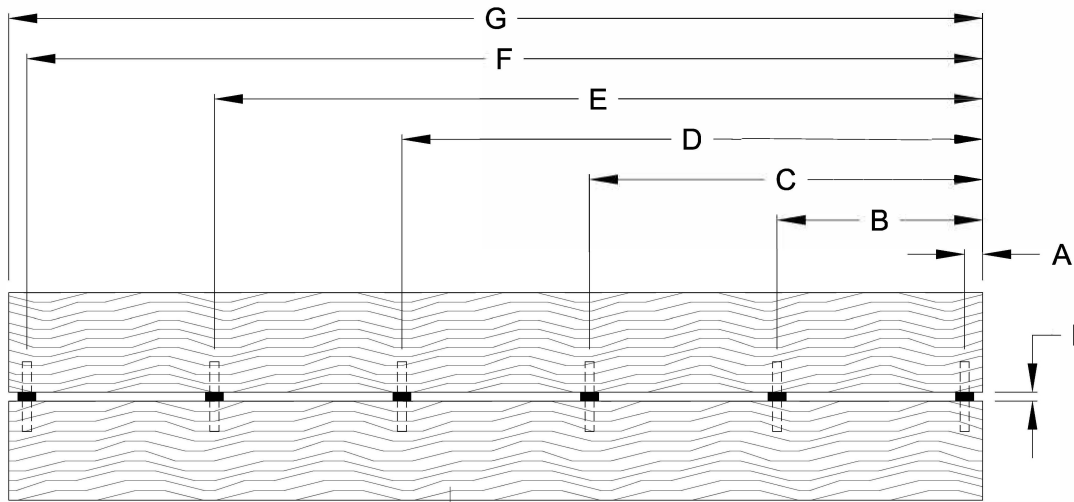


OPTION # 4
[5 FASTENERS]

DIMENSIONS REQUESTED					
A	B	C	D	E	F

- 1/4" FASTENERS
- 3/8" FASTENERS
- 1/2" FASTENERS

MINIMUM BOARD LENGTH - 18"
MAXIMUM BOARD LENGTH - 12'-0"



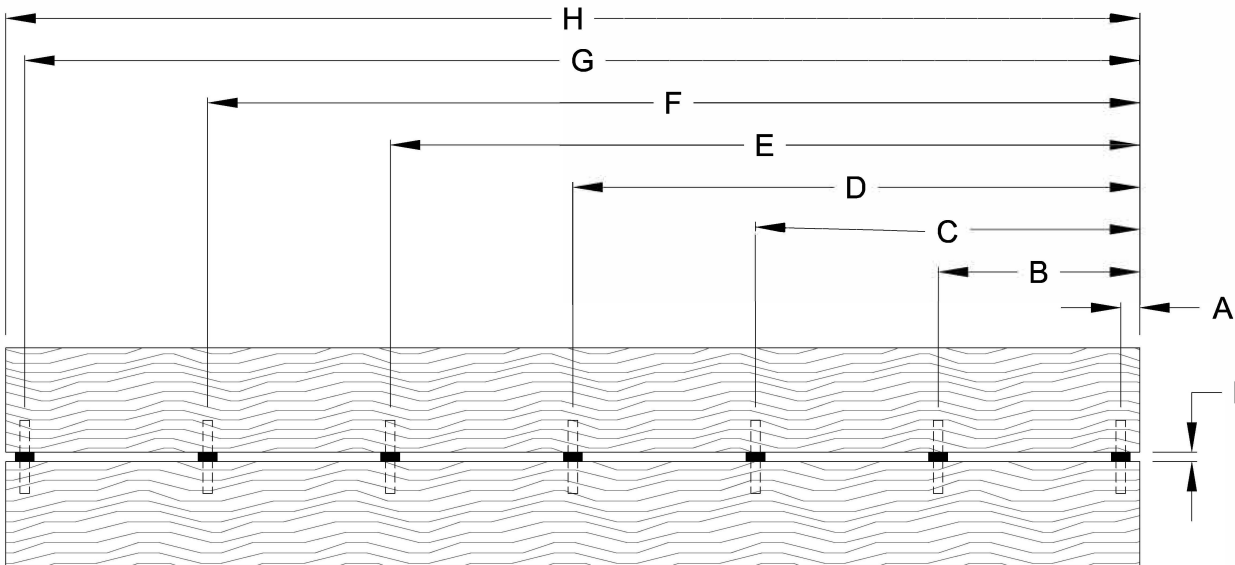
OPTION # 5
[6 FASTENERS]

DIMENSIONS REQUESTED						
A	B	C	D	E	F	G

FASTENER SIZE

- 1/4" FASTENERS
- 3/8" FASTENERS
- 1/2" FASTENERS

MINIMUM BOARD LENGTH - 18"
MAXIMUM BOARD LENGTH - 12'-0"



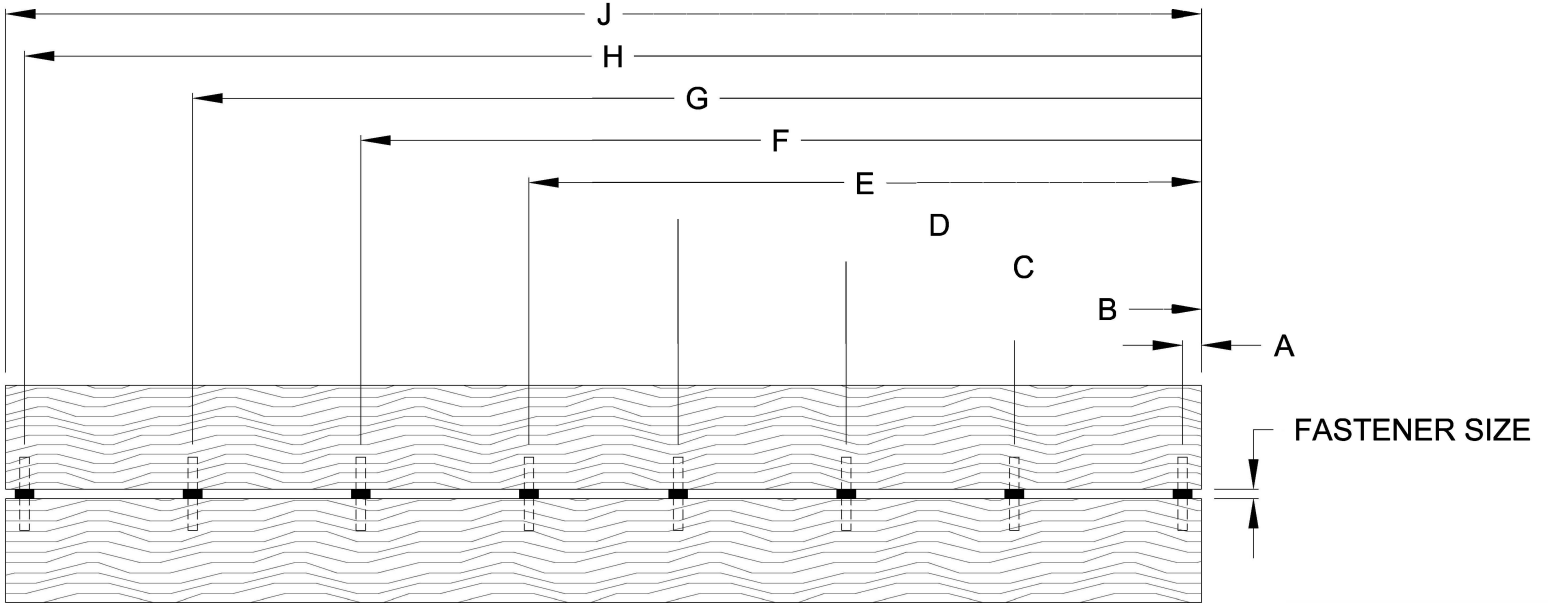
OPTION # 6
[7 FASTENERS]

MINIMUM BOARD LENGTH - 18"
MAXIMUM BOARD LENGTH - 12'-0"

FASTENER SIZE

- 1/4" FASTENERS
- 3/8" FASTENERS
- 1/2" FASTENERS

DIMENSIONS REQUESTED							
A	B	C	D	E	F	G	H



OPTION # 7
[8 FASTENERS]

MINIMUM BOARD LENGTH - 18"
 MAXIMUM BOARD LENGTH - 12'-0"

- 1/4" FASTENERS
- 3/8" FASTENERS
- 1/2" FASTENERS

DIMENSIONS REQUESTED

A	B	C	D	E	F	G	H	J

Panel Width Requirement:

2 ft. 4 ft. 6 ft. 8 ft. 10 ft. 12 ft. Other _____

Joist Spacing:

12 inch 16 inch 24 inch Other _____

Fastener Spacing Requirement:

1/4" 3/8" 1/2"

Time Frame for Project Installation:

0-3 months 3-6 months 1 year Other _____

TimberStrong, LLC

Technical Planning Guide

Customer Contact Information

Title: <input type="checkbox"/> Mr. <input type="checkbox"/> Mrs. <input type="checkbox"/> Miss <input type="checkbox"/> Ms.
First Name:
Last Name:
Company Name:
Position:
Company Address 1:
Company Address 2:
City:
State:
Zip code:
Business Phone:
Cell Phone:
Fax Number:
Email Address:
Website URL:
Site Location:
Delivery Address:
City:
State:
Zip code:

Project Manager Information: If same as customer information please check here

Title: <input type="checkbox"/> Mr. <input type="checkbox"/> Mrs. <input type="checkbox"/> Miss <input type="checkbox"/> Ms.
First Name:
Last Name:
Company Name:
Position:
Business Phone:
Cell Phone:
Fax Number:
Email Address:
Website URL:
Comments: